

## Location

*The James Sub-Division is located in northwest section of Creston between Lincoln and Cottonwood Streets.*



## Amenities

*The James Sub-Division has fifty-four single family lots with a variety of amenities:*

- *Affordable Large Lots*
- *Access to a Greenbelt Area*
- *Covenant Controlled Development*
  - *Paved Streets*
  - *Underground Utilities*

## Lots

*The sub-division has a selection of lot sizes to accommodate the taste of any potential homeowner. Lot sizes range from .36 acres to .67 acres. Each lot is on paved streets with accessibility to underground utilities and a nearby greenbelt area. Lot prices range from \$10,000 to \$20,600.*



Wayne J. Pantini, Executive Director  
P.O. Box 471, 208 West Taylor  
Creston, IA 50801  
641-782-2003 Fax 641-782-9927  
Email [director@ucda.us](mailto:director@ucda.us) Website [www.ucda.us](http://www.ucda.us)

# THE JAMES SUB-DIVISION



Presented by:  
The Union County  
Development Association  
P.O. Box 471, 208 W. Taylor  
Creston, Iowa 50801  
641-782-2003 Fax 641-782-9927

**Brokerage Offices**

Callahan Real Estate

641-782-2332

Carter Agency

641-782-8516

"R" Realty

641-782-9408

Green Valley Realty

641-782-5134

Moberg Real Estate, Inc.

641-782-8438

Monday's Real Estate

641-782-2310

RE/MAX

Heartland Opportunities

641-782-2283

Stewart Realty

641-782-7197

**Builders**

American Homes

641-782-4193

Winterstien Construction

641-782-2702

**Financial Institutions**

First Federal Savings Bank, FSB

641-782-8482

First National Bank

641-782-2195

Great Western Bank

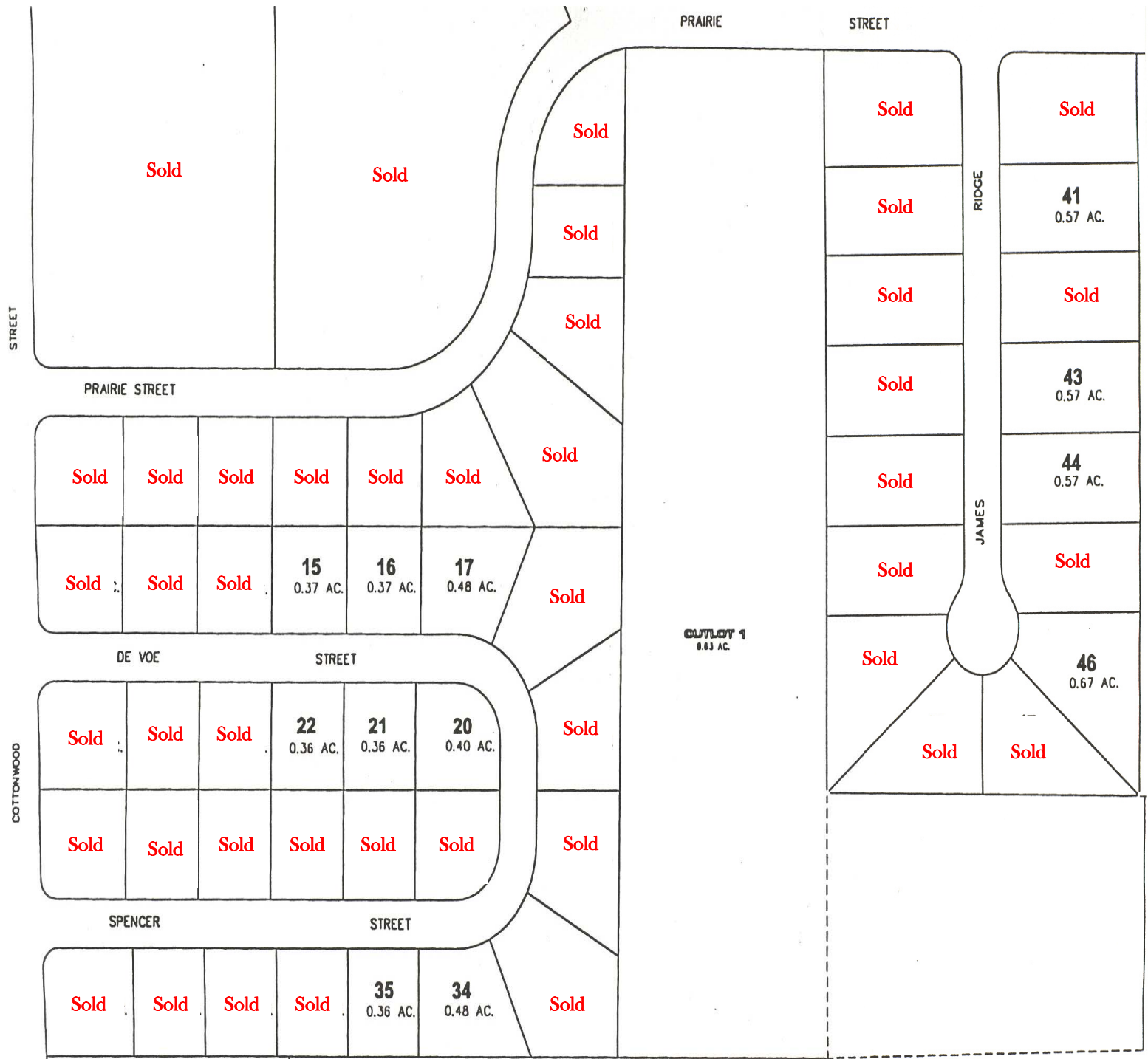
641-782-9300

Iowa State Savings Bank

641-782-1000

Nishna Valley Credit Union

641-782-6080



**JAMES SUB-DIVISION - Prices as of January 1, 2011**

<u>LOT #</u>	<u>ACRES</u>	<u>PRICES</u>	<u>LOT #</u>	<u>ACRES</u>	<u>PRICES</u>	<u>LOT #</u>	<u>ACRES</u>	<u>PRICES</u>
2	0.44	<b>SOLD</b>	23	0.36	<b>SOLD</b>	44	0.57	\$ 16,700.00
3	0.40	<b>SOLD</b>	24	0.36	<b>SOLD</b>	45	0.56	<b>SOLD</b>
4	0.50	<b>SOLD</b>	25	0.43	<b>SOLD</b>	46	0.67	\$ 20,600.00
5	0.87	<b>SOLD</b>	26	0.42	<b>SOLD</b>	47	0.57	<b>SOLD</b>
6	0.49	<b>SOLD</b>	27	0.36	<b>SOLD</b>	48	0.57	<b>SOLD</b>
7	0.37	<b>SOLD</b>	28	0.36	<b>SOLD</b>	49	0.65	<b>SOLD</b>
8	0.37	<b>SOLD</b>	29	0.36	<b>SOLD</b>	50	0.56	<b>SOLD</b>
9	0.37	<b>SOLD</b>	30	0.36	<b>SOLD</b>	51	0.58	<b>SOLD</b>
10	0.37	<b>SOLD</b>	31	0.40	<b>SOLD</b>	52	0.58	<b>SOLD</b>
11	0.43	<b>SOLD</b>	32	0.53	<b>SOLD</b>	53	0.58	<b>SOLD</b>
12	0.42	<b>SOLD</b>	33	0.69	<b>SOLD</b>	54	0.58	<b>SOLD</b>
13	0.37	<b>SOLD</b>	34	0.48	\$ 13,300.00	55	0.73	<b>SOLD</b>
14	0.37	<b>SOLD</b>	35	0.36	\$ 10,000.00			
15	0.37	\$ 10,300.00	36	0.36	<b>SOLD</b>			
16	0.37	\$ 10,300.00	37	0.36	<b>SOLD</b>			
17	0.48	\$ 13,300.00	38	0.36	<b>SOLD</b>			
18	0.69	<b>SOLD</b>	39	0.44	<b>SOLD</b>			
19	0.53	<b>SOLD</b>	40	0.70	<b>SOLD</b>			
20	0.40	\$ 10,600.00	41	0.57	\$16,700.00			
21	0.36	\$ 10,000.00	42	0.57	<b>SOLD</b>			
22	0.36	\$ 10,000.00	43	0.57	\$ 16,700.00			