

Location

The James Sub-Division is located in northwest section of Creston between Lincoln and Cottonwood Streets.

Properties in the sub-division are close to:



Crestmoor Golf Club



Greater Regional Medical Center



Southern Prairie YMCA



Southwestern Community College

Amenities

The James Sub-Division has fifty-four single family lots with a variety of amenities:

- *Affordable Large Lots*
- *Access to a Greenbelt Area*
- *Covenant Controlled Development*
 - *Paved Streets*
 - *Underground Utilities*

Lots

The sub-division has a selection of lot sizes to accommodate the taste of any potential homeowner. Lot sizes range from .36 acres to .67 acres. Each lot is on paved streets with accessibility to underground utilities and a nearby greenbelt area. Lot prices range from \$10,000 to \$20,600.



Wayne J. Pantini, Executive Director
P.O. Box 471, 208 West Taylor
Creston, IA 50801
641-782-2003 Fax 641-782-9927
Email director@ucda.us Website www.ucda.us

THE JAMES SUB-DIVISION



Presented by:
The Union County
Development Association
P.O. Box 471, 208 W. Taylor
Creston, Iowa 50801
641-782-2003 Fax 641-782-9927

Brokerage Offices

Callahan Real Estate
641-782-2332
Carter Agency
641-782-8516

1 Real Estate John Agency
641-782-9408

Green Valley Realty
641-782-5134

Moberg Real Estate, Inc.
641-782-8438

Monday's Real Estate
641-782-2310

RE/MAX
Heartland Opportunities
641-782-2283

Stewart Realty
641-782-7197

Builders

American Homes
641-782-4193

Winterstien Construction
641-782-2702

Contractors

Eblen Construction
641-782-4029

Financial Institutions

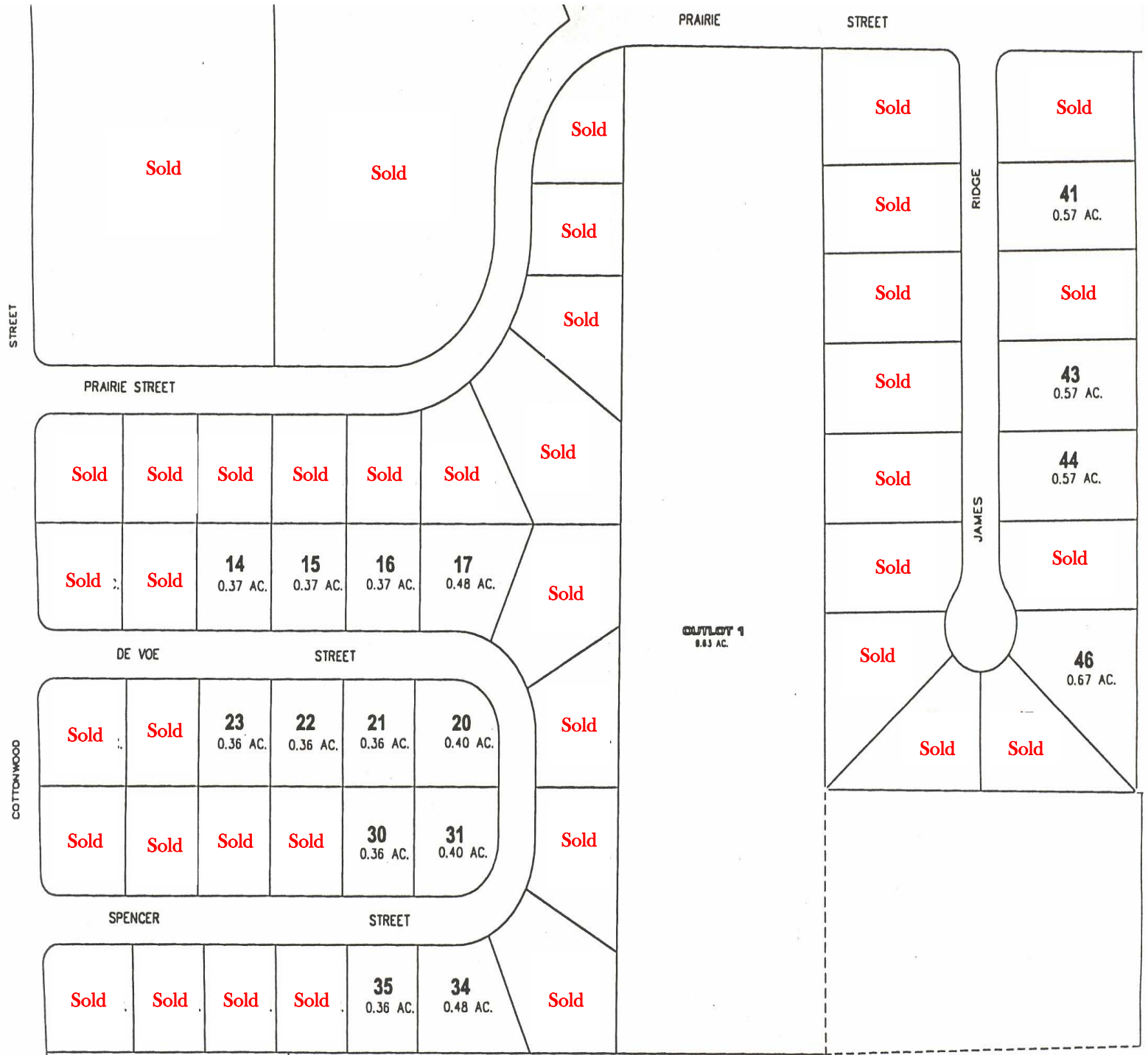
First Federal Savings Bank
641-782-8482

First National Bank
641-782-2195

Great Western Bank
641-782-9300

Iowa State Savings Bank
641-782-1000

Nishna Valley Credit Union
641-782-6080



JAMES SUB-DIVISION - Prices as of January 1, 2010

| <u>LOT #</u> | <u>ACRES</u> | <u>PRICES</u> | <u>LOT #</u> | <u>ACRES</u> | <u>PRICES</u> | <u>LOT #</u> | <u>ACRES</u> | <u>PRICES</u> |
|--------------|--------------|---------------|--------------|--------------|---------------|--------------|--------------|---------------|
| 2 | 0.44 | SOLD | 23 | 0.36 | \$ 10,000.00 | 44 | 0.57 | \$ 16,700.00 |
| 3 | 0.40 | SOLD | 24 | 0.36 | SOLD | 45 | 0.56 | SOLD |
| 4 | 0.50 | SOLD | 25 | 0.43 | SOLD | 46 | 0.67 | \$ 20,600.00 |
| 5 | 0.87 | SOLD | 26 | 0.42 | SOLD | 47 | 0.57 | SOLD |
| 6 | 0.49 | SOLD | 27 | 0.36 | SOLD | 48 | 0.57 | SOLD |
| 7 | 0.37 | SOLD | 28 | 0.36 | SOLD | 49 | 0.65 | SOLD |
| 8 | 0.37 | SOLD | 29 | 0.36 | SOLD | 50 | 0.56 | SOLD |
| 9 | 0.37 | SOLD | 30 | 0.36 | \$ 10,000.00 | 51 | 0.58 | SOLD |
| 10 | 0.37 | SOLD | 31 | 0.40 | \$ 10,600.00 | 52 | 0.58 | SOLD |
| 11 | 0.43 | SOLD | 32 | 0.53 | SOLD | 53 | 0.58 | SOLD |
| 12 | 0.42 | SOLD | 33 | 0.69 | SOLD | 54 | 0.58 | SOLD |
| 13 | 0.37 | SOLD | 34 | 0.48 | \$ 13,300.00 | 55 | 0.73 | SOLD |
| 14 | 0.37 | \$ 10,300.00 | 35 | 0.36 | \$ 10,000.00 | | | |
| 15 | 0.37 | \$ 10,300.00 | 36 | 0.36 | SOLD | | | |
| 16 | 0.37 | \$ 10,300.00 | 37 | 0.36 | SOLD | | | |
| 17 | 0.48 | \$ 13,300.00 | 38 | 0.36 | SOLD | | | |
| 18 | 0.69 | SOLD | 39 | 0.44 | SOLD | | | |
| 19 | 0.53 | SOLD | 40 | 0.70 | SOLD | | | |
| 20 | 0.40 | \$ 10,600.00 | 41 | 0.57 | \$16,700.00 | | | |
| 21 | 0.36 | \$ 10,000.00 | 42 | 0.57 | SOLD | | | |
| 22 | 0.36 | \$ 10,000.00 | 43 | 0.57 | \$ 16,700.00 | | | |